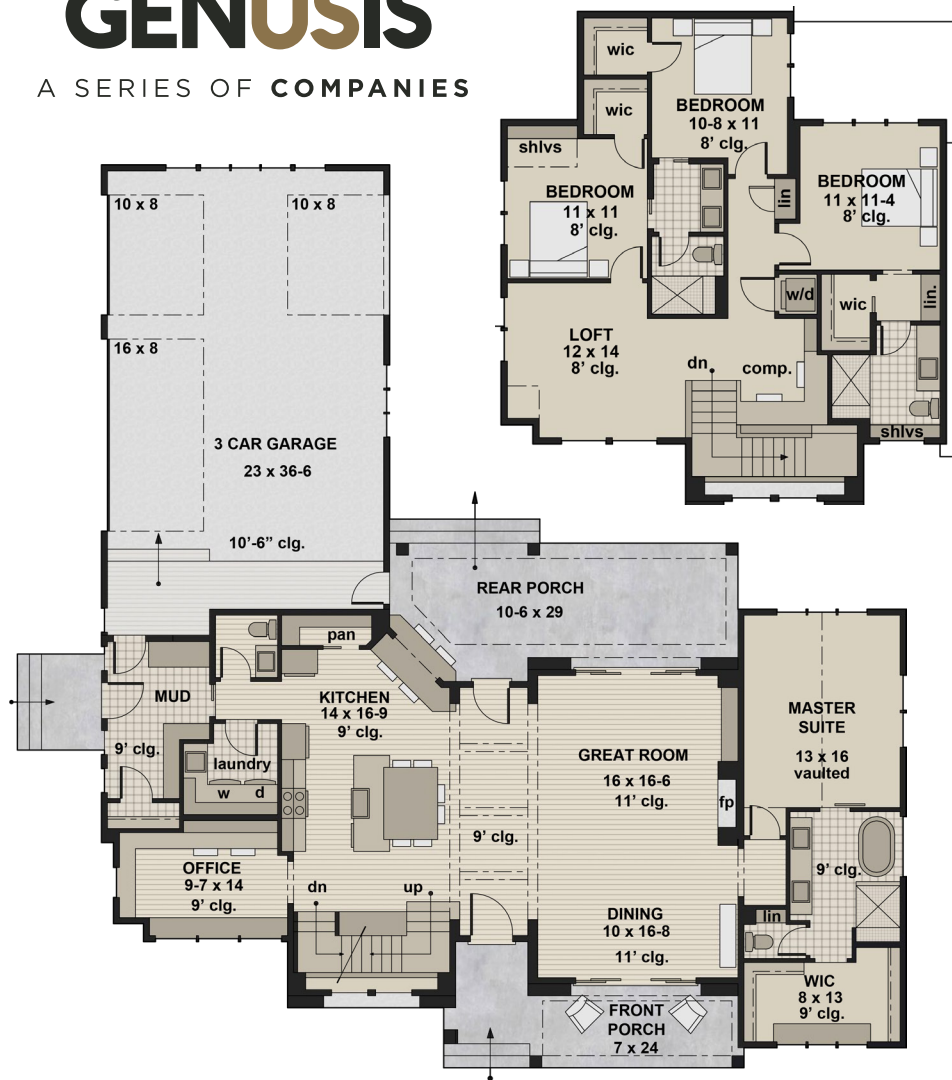




GENUSIS

A SERIES OF COMPANIES



BUILT BY


McIntyre
HOMES

VICTORY

VICTORY PLAN DETAILS

Living Size: 3011 sf. • Garage: 3-Car • Bedrooms: 4 • Bathrooms: 3.5
Master on Main • 2 Mini-Suites on Second Floor

The stunning design and eye-catching details of this 3,011 sf. Modern Farmhouse make this home a real beauty! Inside the stone and siding exterior, you'll find 4 bedrooms, 3.5 baths, and a 3-car garage. Kitchen features a generously sized island with a built-in sink and dishwasher plus a table section with seating for 6, perfect for food prep and casual meals. The spacious great room and dining area offer sliding doors at the front and rear of the home to bring in tons of light! The great room boasts a large fireplace, and both areas have expansive 11' ceilings. The upper floor features 3 bedroom mini-suites. 2 bedrooms share a Jack & Jill style bathroom and a third bedroom has it's own bath. Each bedroom offers a walk-in closet. Enjoy a spacious loft area to simply hang out with friends and family.

GENUSISHOMES.US

